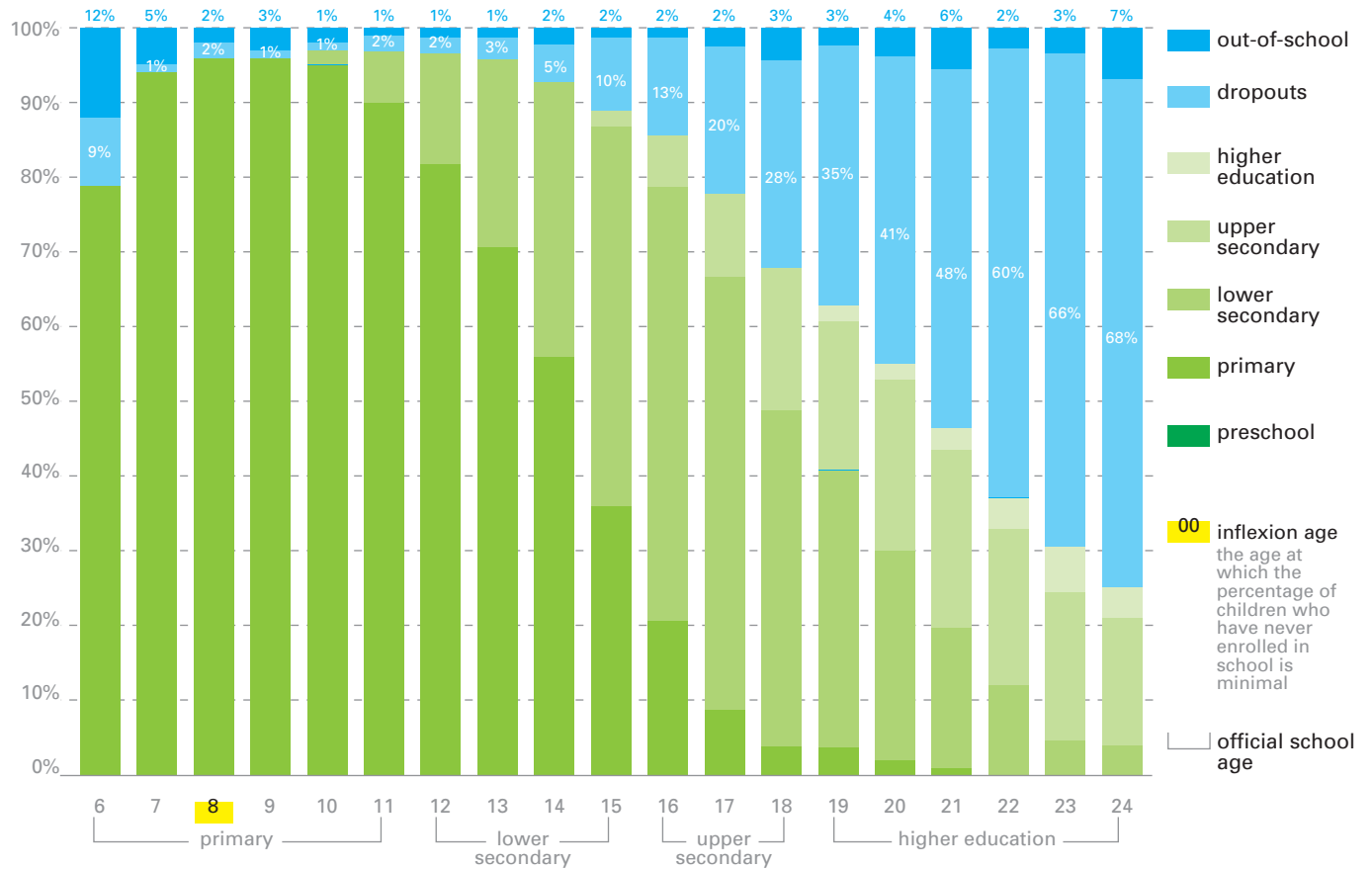




Source: Questionnaire on basic wellbeing indicators (QUIBB 2005) – Estimated population (UIS 2005)

1. Schooling profile by age



late entry

2% of 6-11 years enter school late

over-aged students in primary school

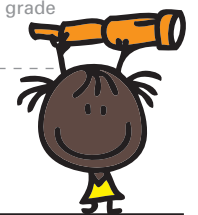
29% are at least 3 years older than the official age for their grade

over-aged students in final year of primary school

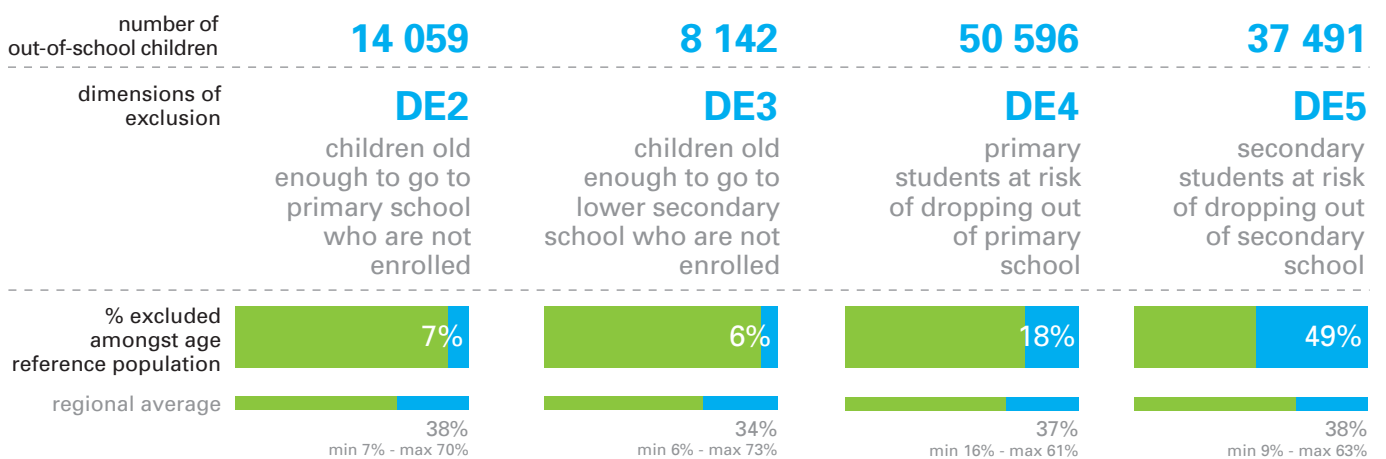
30% are at least 3 years older than the official age for their grade

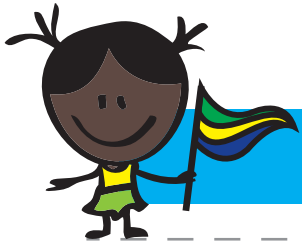
over-age adolescents

4% of primary school students are over 15 years



2. The 4 dimensions to consider

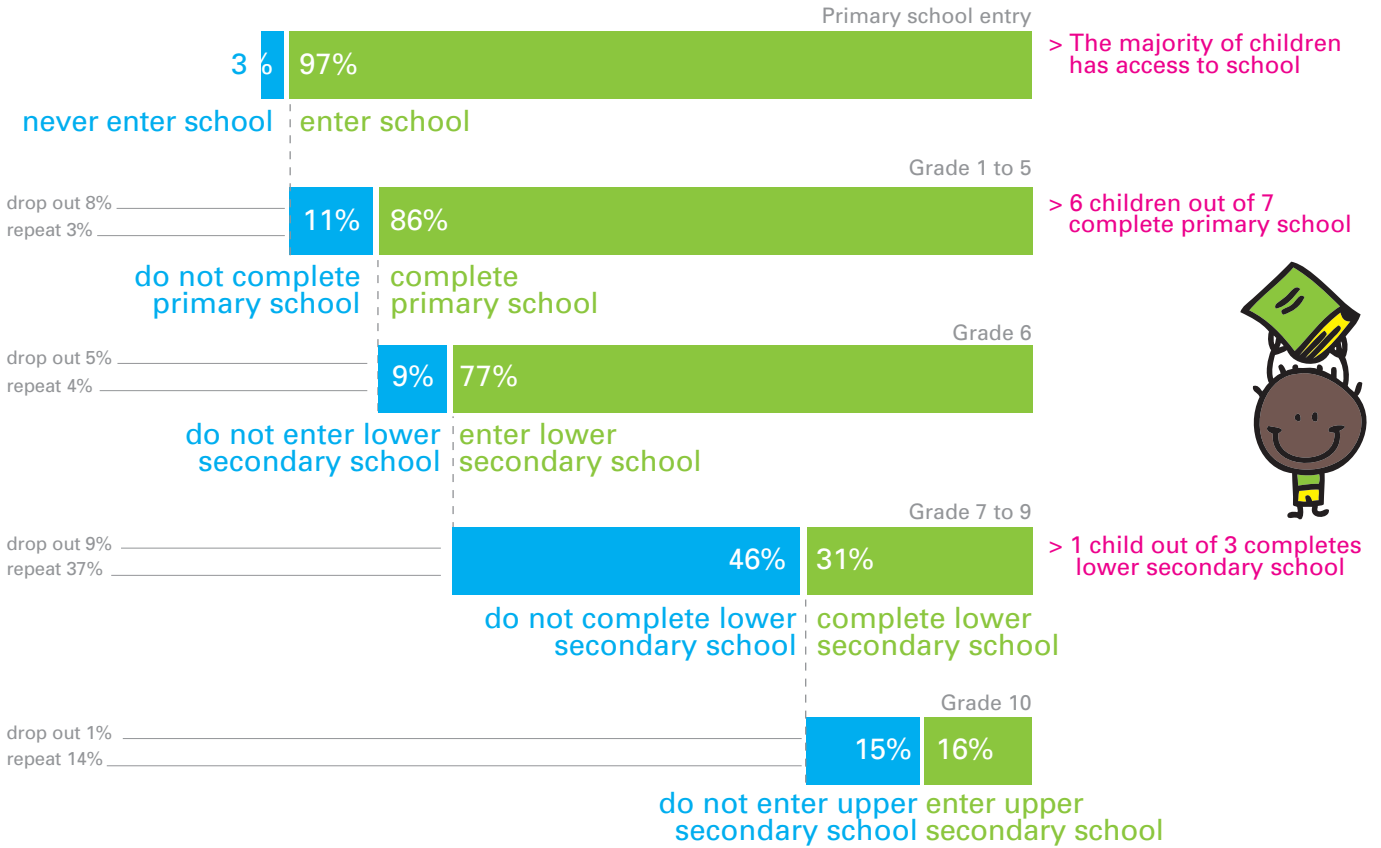




GABON

3. Schooling pathways of school aged children

Reference population: 17-18 years olds



4. Main factors of school exclusion

Reference population: 17-18 years olds

